

EAGLE Spring Library Programs will be announced in the March /April Newsletter!!!

OUR KID'S COUNT

January/February Schedule

January 12th

Charlie Perry
Financial Planning
(Parent Topic)

January 26

Dr. Hansen
Dental Month
(Parent and child together)

February 9

PAT—Lacy, Misty and Carol
Let's Get Physical!
(Parent and Child Together)

February 23

Ginger Williams
CC Chamber
Inexpensive Entertainment
Ideas
(Parent Topic)

Our Kids Count meets at Trinity
United Methodist Church
601 Milwaukee Street in
Charles City
5:30-7:00 PM

Have you heard about the new Iowa State University Extension Early Learning Webinars?

This is a new online learning opportunity for early
childhood professionals!

Participate from any computer with internet access
and speakers.

Choose from two times of day.

No Travel required!

\$20 fee per topic

- 2 hours credit for Iowa DHS professional development requirements for licensed or registered child care programs
- 2 hours credit for CDA Credential
- .2 CEUs from ISU for additional \$10

Next topic: *Dramatic Play* begins 1/12/10

Registration Deadline 1/10/10

Want to learn more?

Contact Diane at 641-394-2174 or

eaglepro@iastate.edu for a brochure or visit

www.extension.iastate.edu/childcare/earlylearning

ISU Extension
Chickasaw County

EAGLE Monthly Newsletter January/ February 2010

Exploring Avenues for
Getting Literate Early
An Empowerment Project
of Floyd, Mitchell and
Chickasaw Counties



Tel: 641-394-2174

EAGLE Schedule of Events—January/February 2010

EAGLE Program Coordinator: Diane Day - Telephone: (641)394-2174 - Email: eaglepro@iastate.edu

** Parents—please post this on your refrigerator as a reminder of these upcoming events.

Key: (TYPE OF EVENT) P/C = Parent & Child C= Child P=Parent DC=Day Care Providers PK—Preschool Classroom Program

Floyd County

Monday, January 18

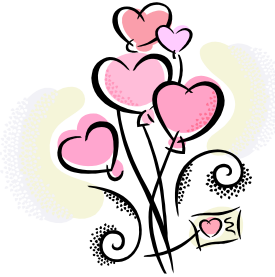
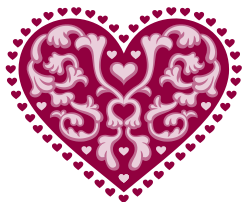
EAGLE presents *Chicka Chicka Boom Boom* for Charles City IC Preschool AM and PM classes (PK).

Thursday, February 11

Registered Daycare Provider Crate Rotations in Floyd County (DC).

Please note:

January crate rotations in Floyd county will be divided between Tuesday, January 12 and Monday, January 18. I will call you to let you know what day your rotation will be.



Mitchell County

Wednesday, January 20

Registered Daycare Provider Crate Rotations in Mitchell County (DC)

Wednesday, January 20

EAGLE presents *Snowmen at Night* for Noah's Ark Preschool AM and PM classes (PK).

Wednesday, February 17

Registered Daycare Provider Crate Rotations in Mitchell County (DC).

Happy Valentine's Day!



Chickasaw County

Monday, January 11

Registered Daycare Provider crate rotations in Chickasaw County (DC).

Monday, February 8

Registered Daycare Provider crate rotations in Chickasaw County (DC).